



CHATTERTON | REES



Flat 1, 120 Broughton Road, London, SW6 2LB
Asking price £1,400,000





Flat 1, 120 Broughton Road

London, SW6 2LB

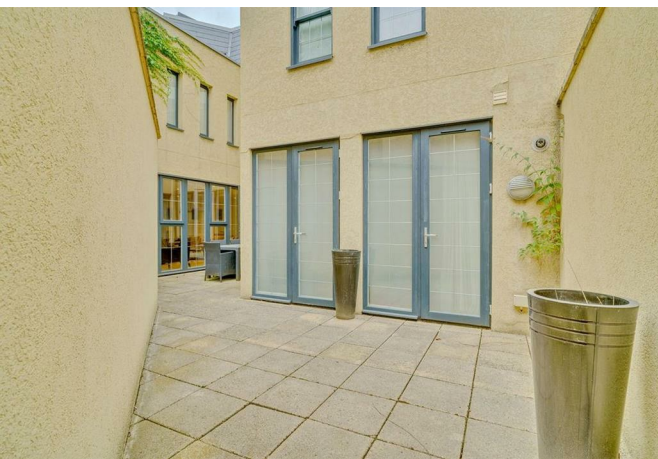
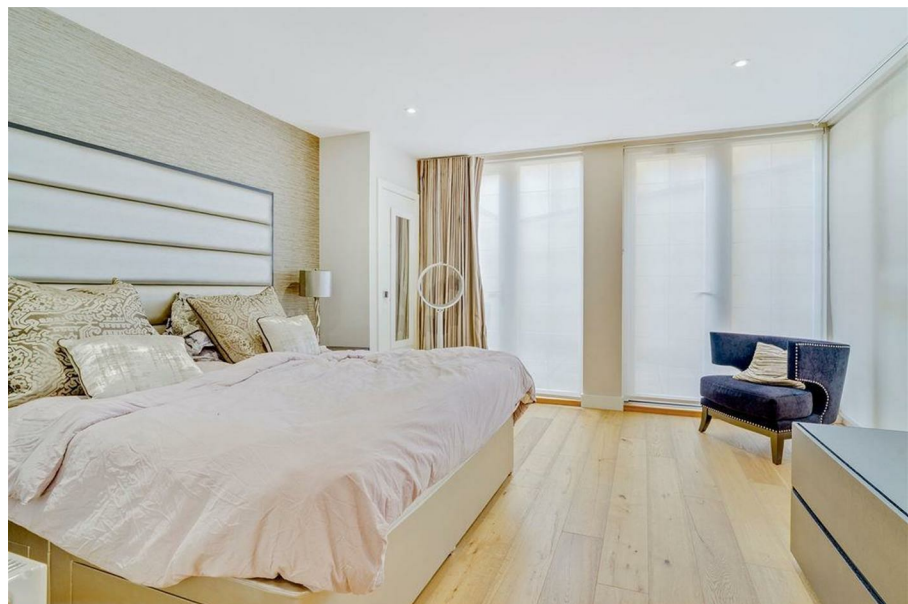
- Four Bedroom
- Garden
- Long Lease
- Lateral Apartment
- In excess of 1800sqft
- No Chain

A large (1804sqft) ground floor flat of a newly built development, this four bedroom apartment offers a well designed modern layout just moments from the Thames and a short distance from Fulham Broadway and Parsons Green.

The property is finished to a high standard throughout and includes a spacious reception room with an open plan kitchen fitted with Bosch appliances and a wine cooler. There is direct access to a private garden. The main bedroom features an en suite bathroom and walk in wardrobe. A second bedroom also includes an en suite shower room, while two further bedrooms share a contemporary bathroom.

Broughton Road is a quiet residential street close to the shops and cafes of Wandsworth Bridge Road, with South Park just a short walk away. As well as Parsons Green which has plenty of pubs, restaurants and cafes to chose from as well as the choice of three stations, two have the District line and another is the overground allowing easy commutes in and out of central London.

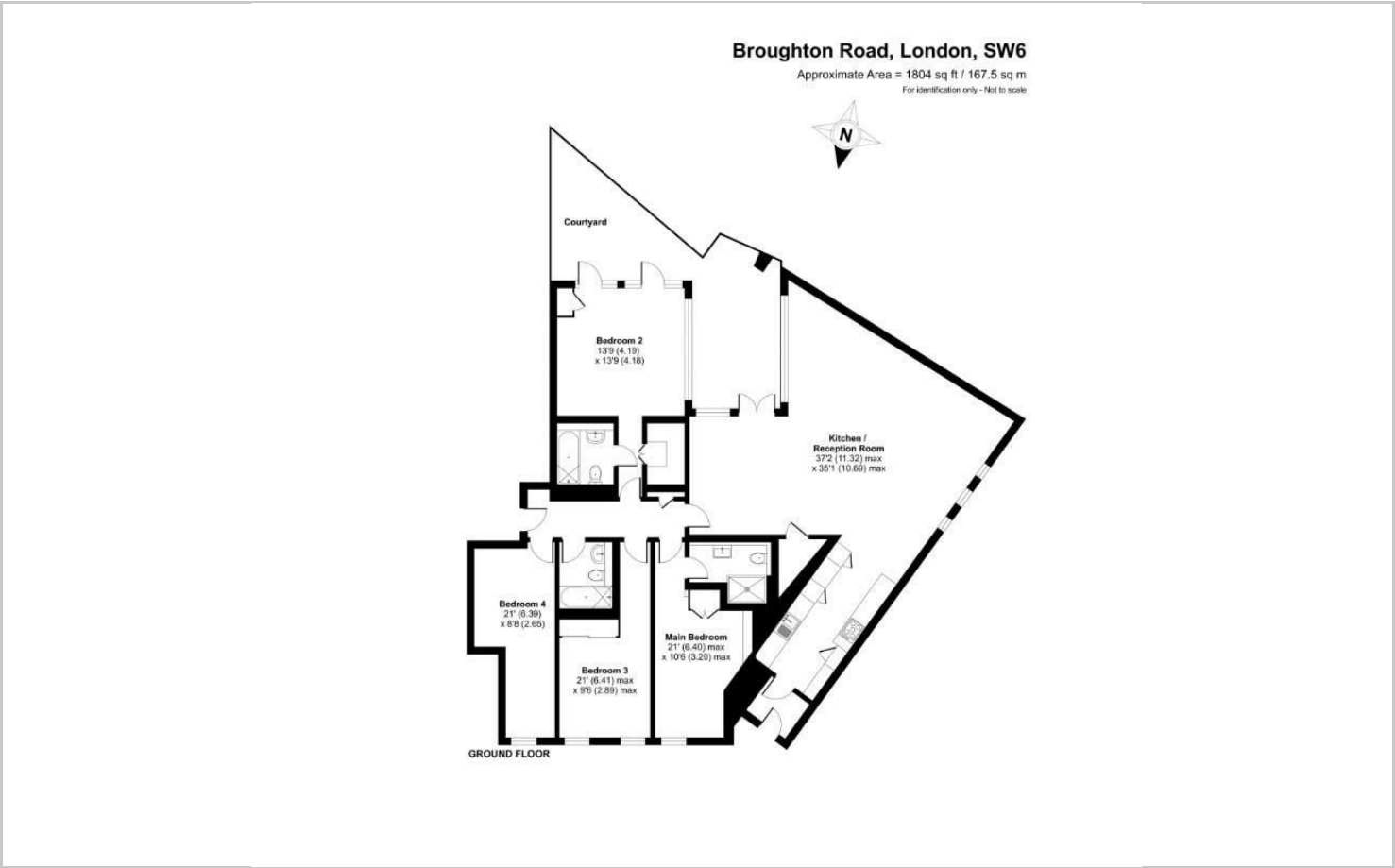
Asking price £1,400,000







Floor Plans

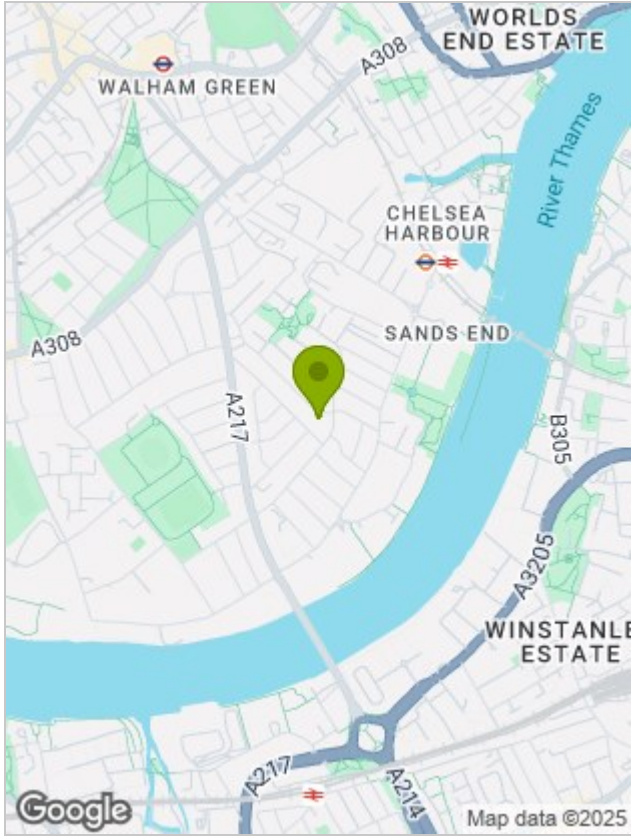


Viewing

Please contact our Chatterton Rees Office on 020 3780 0580 if you wish to arrange a viewing appointment for this property or require further information.

The particulars are set out as a general outline only for the guidance of intended purchasers or lessees, and do not constitute, any part of a contract. Nothing in these particulars shall be deemed to be a statement that the property is in good structural condition or otherwise nor that any of the services, appliances, equipment or facilities are in good working order. Purchasers should satisfy themselves of this prior to purchasing.

Location Map



Energy Performance Graph

